

All Star II 2011 "Swag" order form for _____

DEADLINE: Sunday, June 19

Type your name here
(and we mean it 😊)



Submit your order electronically. Here's how: This document is an editable PDF file. Review pages 2-4 to choose styles, colors, and designs. Type in your name above and your choices below, Save As, and email your saved version of this document to us at chairs2011@allstar2.org. If you have trouble saving your form, try the "submit order" button to the right or just send us an email with a text description of what you want.



T-SHIRTS	Style	Size <small>please indicate age + size</small>	Color <small>see page 2</small>	Front design <small>see page 3</small>	Back design <small>see page 3</small>	Dollar amount
Quantity	Short sleeve or long sleeve	Adult: S, M, L, XL, 2XL Youth: YS, YM, YL, YXL Toddler: 2T, 3T, 4T	Carolina blue, navy, gray, pink, kiwi, lime, tangerine, red. See page 2 for long sleeve and toddler colors.	F1 "AS2 logo" F2 "star+gulls" F3 "AS2 emblem" or None (on front)	B1 "simplicity" B2 "grand march" B3 "you will..." or None (on back)	Adult short: \$12 Adult long: \$15 Youth short/long: \$10 Toddler: \$9 All sizes: add \$2 for 2XL+
EXAMPLE 2	short sleeve	Adult XL	Kiwi	F1	B2	\$24
TANK TOPS	Style <small>see page 2</small>	Size	Color <small>see page 2</small>	Front design <small>see page 3</small>	Back design <small>see page 3</small>	Dollar amount
Quantity	Mens Ladies	Mens: S, M, L, XL, 2XL Ladies: S, M, L, XL, 2XL	Mens: blue jean, light green, sandstone. Ladies: blossom, celedon, violet, raspberry. Both: seafoam, flo blue.	F1 "AS2 logo" F2 "star+gulls" F3 "AS2 emblem" or None (on front)	B1 "simplicity" B2 "grand march" B3 "you will..." or None (on back)	Mens: \$15 Ladies: \$14 2XL or 3XL: add \$2
POLO SHIRTS	Style <small>see page 2</small>	Size	Color <small>see page 2</small>	Front design <small>see page 3</small>	Back design <small>see page 3</small>	Dollar amount
Quantity	Mens Ladies Youth	Mens: S, M, L, XL, 2XL Ladies: S, M, L, XL, 2XL Youth: YS, YM, YL, YXL	Navy, forest green, light blue, maroon, Gray, pink (ladies only)	F1 "AS2 logo" F2 "star+gulls" F3 "AS2 emblem" or None (on front)	B1 "simplicity" B2 "grand march" B3 "you will..." or None (on back)	Mens: \$17 Ladies: \$16 Youth: \$15 2XL or 3XL: add \$2
HOODIES	Style	Size	Color	Front design <small>see page 3</small>	Back design <small>see page 3</small>	Dollar amount
Quantity	Adult Youth	Adult: S, M, L, XL, 2XL, 3XL Youth: S, M, L, XL, 2XL, 3XL	Navy, gray, dark green, black, maroon	F1 "AS2 logo" F2 "star+gulls" F3 "AS2 emblem" or None (on front)	B1 "simplicity" B2 "grand march" B3 "you will..." or None (on back)	Adult: \$26 Youth: \$24 2XL or 3XL: add \$2
SHORTS	Style	Size	Color	Front design	Back design	Dollar amount
Quantity	Athletic shorts. One style only. See page 2.	S, M, L, XL, 2XL, 3XL	Black, stone gray, vibe navy	F1 "AS2 logo" F2 "star+gulls" F3 "AS2 emblem"	N/A	\$18
TOTE BAG	Quantity	Strap color <small>Navy, green, or black</small>	Front design	Back design	Dollar amount <small>Price per bag: \$23</small>	
			F2 "star+gulls"	B2 "grand march"		



5.3 oz. Heavy Cotton T-Shirt



100% preshrunk cotton.
Short or long sleeve:
S, M, L, XL, 2XL, 3XL

Long sleeve colors:
Carolina blue, navy, forest green, red, gray, black

Toddler colors:
Light blue, light pink, navy, red, royal blue, sport gray



Carolina blue



Navy



Sport grey



Light pink



Kiwi



Lime



Tangerine



Cardinal red



6.1 oz. Ringspun Garment-Dyed Tank Top



100% ringspun cotton; preshrunk, soft-washed, garment-dyed fabric; double-needle stitched hem;

S, M, L, XL, 2XL

Men's Colors:



Blue jean



Light green



Flo blue*



Sea foam*

*Also available for ladies

Ladies' Colors:



Blossom



Celedon



Raspberry



Violet



5.6 oz., 50/50 Jersey Polo with SpotShield™



50% / 50% preshrunk jersey; seamless body with SpotShield™ welt-knit collar; double-needle stitched bottom hem; two-button placket with pearlized buttons; S, M, L, XL, 2XL, 3XL



Navy



Forest green



Light blue



Maroon



Red



Gray



Pink*

*Pink available for ladies only. All other colors available for both men and ladies.



Champion 9 oz. 50/50 Pullover Hoodie

50% cotton, 50% polyester; 1x1 rib with spandex at waist and cuffs; two-ply hood; front pouch pocket with bartacks for durability; sideseamed; "C" logo above left cuff; matching drawstring;

S, M, L, XL, 2XL, 3XL

Also available in Youth sizes

Hoodie colors:

Navy
Gray
Dark Green
Black
Maroon



10 oz., Organic Cotton Canvas Boater Tote

organic cotton; contrast color strap and bottom; Velcro® closure with hideaway brass key clip; front self-fabric pocket; 21"W x 16 1/4"H x 7"D;

Black, Navy, or Green strap



4.1 oz. Double Dry® Mesh Shorts with Piping

100% polyester Double Dry® flatback mesh; Double Dry® anti-microbial fights odor & wicks away moisture; 9" inseam, double-needle stitched hem & on-seam pockets; drawstring & contrast self-fabric side piping; reflective "C" logo on left hip; S, M, L, XL, 2XL, 3XL

Shorts colors:

Black
Stone grey
Vibe navy

All Star II 2011 T-shirt designs

Front designs

For each shirt, choose one of these three designs for the front of the shirt (F1, F2, F3, or “none”)

F1 “AS2 logo”

**ALL ★ II
2011**

F2 “star+gulls”



F3 “AS2 emblem”



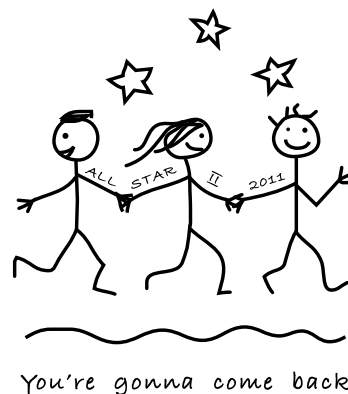
Back designs

For each shirt, choose one of these three designs for the back of the shirt (B1, B2, B3, or “none”)

B1 “simplicity”

**S I M P L I C I T Y
★ B Y ★
D E S I G N**

B2 “grand march”



B3 “you will come back”

**Y O U
★ W I L L ★
C O M E B A C K**

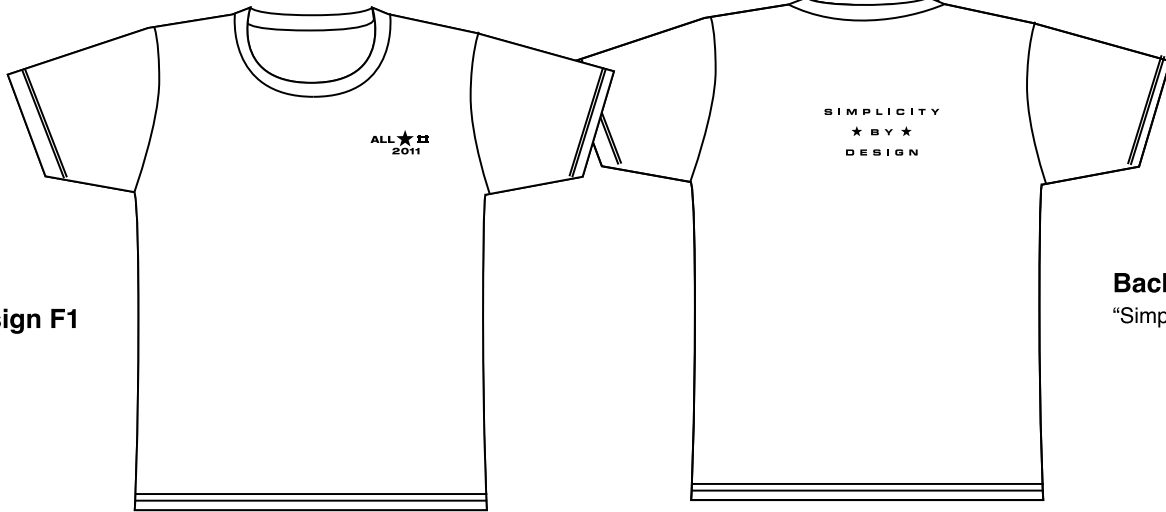
All Star II 2011 T-shirt examples

Choose a front design
(F1, F2, F3 or none)

Choose a back design
(B1, B2, B3 or none)

FRONT

BACK

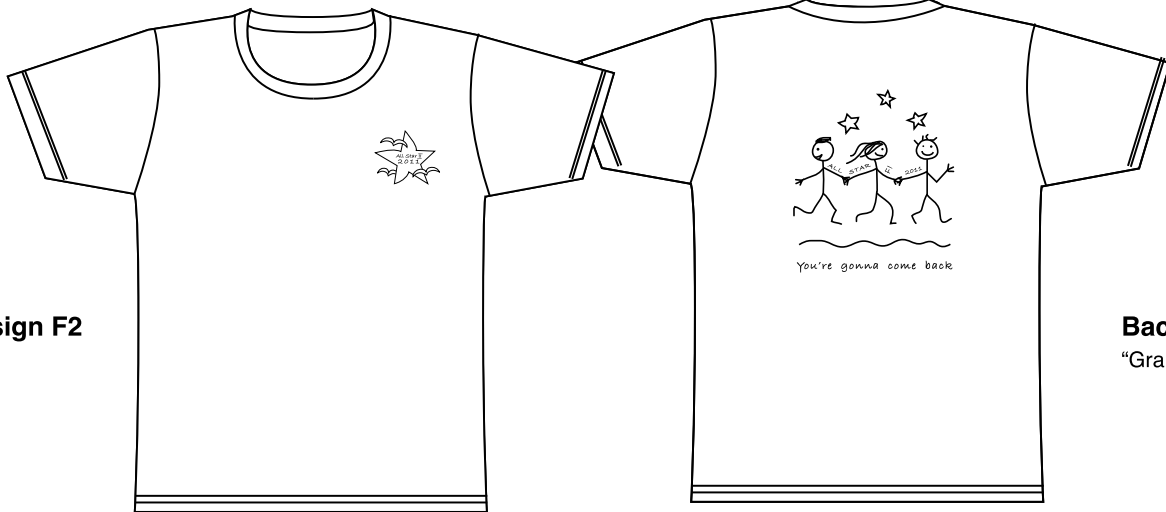


Front Design F1
"AS2 logo"

Back Design B1
"Simplicity"

FRONT

BACK

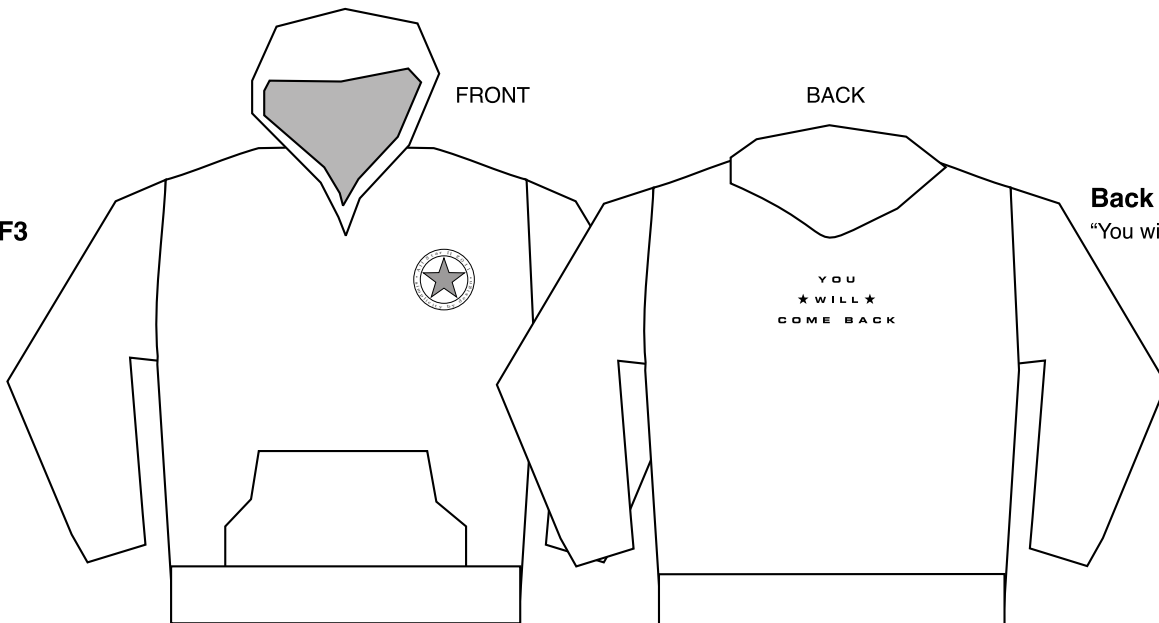


Front Design F2
"Star+gulls"

Back Design B2
"Grand March"

FRONT

BACK



Front Design F3
"AS2 emblem"

Back Design B3
"You will come back"